

Portes des Iris conference package is exceptional because it adds a **unique gastronomic dimension to conferences** organized in a totally private and beautiful environment.

The historic, technically proficient venue contains a **large selection of conference and breakout rooms**. Highly unusual teambuilding and incentive activities can be organized inside or outside on its terraces, courtyards and hundred hectares of land.

There is nothing like fresh air and beautiful surroundings to **clear the mind, provide focus and inspire creative thinking** – the essential ingredients for a successful and enjoyable conference.

DAILY CONFERENCE PACKAGE

From Monday to Thursday from 8h00 to 18h00

Minimum 50 persons – including:

- A fully equipped conference room with sound, projection equipment and mineral water
- Two coffee breaks - outside if weather permitting
- Three course seated luncheon or buffet including mineral water and coffee
- Event coordination, parking & service



Full day : CHF 185.00 (+ VAT) per day and per person

Additional cost for breakout rooms, offer upon request.

GASTRONOMY

Philippe Rochat, Lazare Sagner, Michel Hug, the three Head Chefs of internationally famous RSH Quality Food Concept SA, propose a selection of extraordinary, delectable dishes which will make your conference an unforgettable gastronomic experience.



TEAM BUILDING & INCENTIVE

A wide variety of activities designed to reinforce cooperation and team spirit can be arranged inside or on the terrace grounds outside. Packages and proposals are available upon request.



EVENING AT PORTES DES IRIS

We suggest that you wrap-up an intensive day of meetings with an evening of entertainment. The rental and material service fees are as follow (price per person + VAT)

Dinner/stand-up dinner, with cocktail	Frs 50.00
Dinner/stand-up dinner, no cocktail	Frs 45.00
Cocktail	Frs 25.00

These prices do not include Food & Beverages.

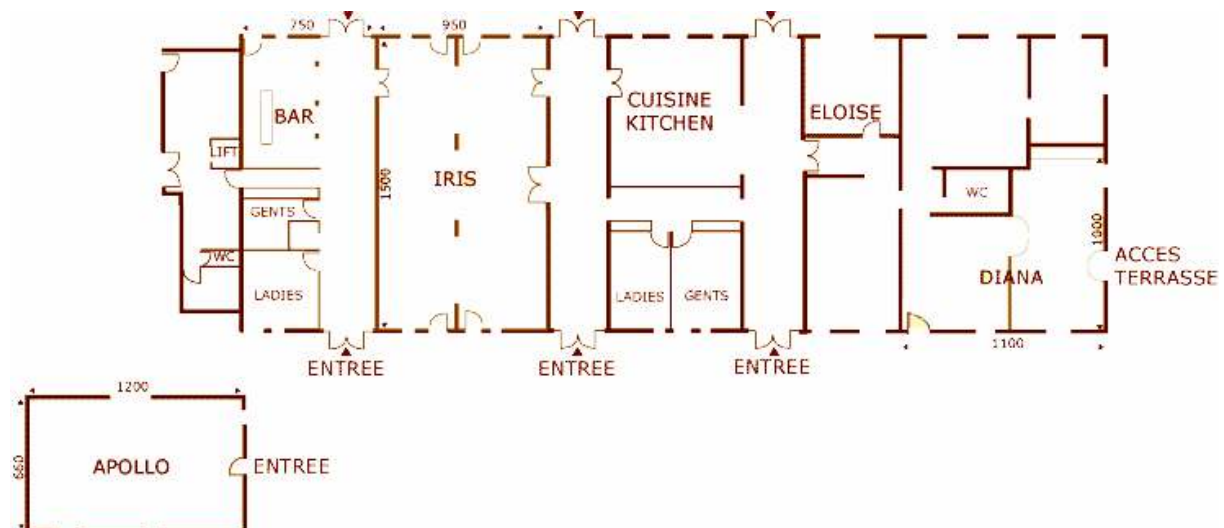


ROOM CAPACITY

Room	Location	Dimension (leng/width/ height)	Sqm	Class	Theater	U	Square	Banquet	Cocktail
Athena	1st floor	12x15x8	180	160	300	60	80	-	-
Dorianna	1st floor	32.5x15x12	488	250	500	2x50	2x60	450	700
Iris+Bar	ground	9.5x15x3	143	80	100	-	-	100	250
Eloise	ground	4x7x3	28	16	20	8	16	24	-
Diana	ground	6x8.5x3	51	20	30	10	20	40	-
Apollo	annex	12x6.5x5	78	50	100	30	40	60	120
Juno	annex	7x3.5x3	25	-	24	12	16	16	-

ROOM FLOOR PLAN

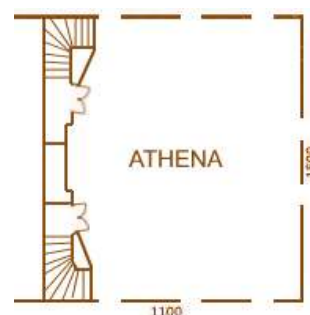
Ground floor - direct access to the terrace and gardens



1st floor



2nd floor



PORTES DES IRIS
BANQUETS & CONFERENCES

CH-1115 VULLIERENS 5/MORGES

T +41 (0)21 869 88 80

F +41 (0)21 869 88 81

info@portesdesiris.ch

www.portesdesiris.ch